



# HIGH-TECH CARE...

## *Hometown Touch*

Making sure Sidney Health Center has the newest and best equipment available to treat their patients and our donors, has always been a top priority for the Foundation for Community Care. When a patient presents with a cardiac emergency, the LIFEPAK 15 is the gold standard of care for this situation. Sidney Health Center relies on LIFEPAKs in the Emergency Department and the Critical Care Unit for cardiac emergencies. With this device, patient's heart rhythms can be non-invasively monitored, paced and defibrillated if needed.

LIFEPAKs are necessary pieces of equipment for every hospital. When the organizer's of the Cattlemen's Ball learned that Sidney Health Center's LIFEPAKs were due for an upgrade, they made it their mission to raise the funds to ensure BOTH were replaced with the gold standard, LIFEPAK 15. Thanks to this determined group, and a hand from the Foundation, the newest and best can be found in the Emergency Department and the Critical Care Unit.

***"The LIFEPAK-15 brings improved defibrillation capabilities but also more advanced monitoring, including assessment of lung function, allowing more rapid and precise diagnosis. This facilitates early introduction of appropriate treatment and better outcomes."***

**- O. Pete Council, MD  
Emergency Room Medical Director and Family Medicine Physician**

**Purchased  
with funds  
raised at  
Cattlemen's  
Ball events**

## NOTES FROM THE FOUNDATION TEAM

Being an eastern Montanan is a choice. Most of us choose to live here because the pace, landscape, and polite folks appeal to us. The good parts outweigh the struggles, most days.

As our community ages, some of us decide we need to relocate to the city, where bigger hospitals can take better care of us, because there are specialists, more clinics, and more opportunities. For some, that is the only option, but others have found that the grass isn't always greener.

All of us at the Foundation have had candid conversations with friends and donors who have returned "home." These conversations have revealed that they didn't get better care; that they felt like a number and not a person. At Sidney Health Center, they felt genuine concern from their physicians, nurses, pharmacy staff, and others that were involved in their care.

Our Foundation team is so proud of where Sidney Health Center is and where it is heading. Exciting things are on the horizon in healthcare for us and that makes the job of fundraising for it feel more like a privilege than a job.

Thanks to you for helping make it all happen.

With Appreciation,

*Melissa Boyer*   *Jennifer Boyer*   *Jaena Cotter*  
Melissa Boyer   Jennifer Boyer   Jaena Cotter





# OUR MISSION

*The mission of the Foundation for Community Care is to help ensure the continuance and quality of local healthcare services.*

## Board of Directors

**Chair - Cami Skinner – Sidney, MT**  
**Vice Chair- David Williams – Sidney, MT**  
**Treasurer - Lorilee Norby – Sidney, MT**  
Jeff Aisenbrey – Sidney, MT  
Paula Bostrom – Sidney, MT  
Margaret Bradley – Sidney, MT  
Jared Burd, O.D. – Sidney, MT  
Larry Christensen – Sidney, MT  
Carl Dynneson – Sidney, MT  
Kristan Haugen – Alexander, ND  
Doug Hettich – Sidney, MT  
Duane Mitchell – Sidney, MT  
Larry Riggs – Sidney, MT  
Joe Steinbeisser – Sidney, MT  
Todd Verhasselt – Savage, MT  
Lana Watson – Lambert, MT  
Rosemary Weber – Fairview, MT

## Emeritus Board of Directors

Bud Groskinsky  
Michael McCollum  
Leonard Odenbach

## Staff

Melissa Boyer, CGPA - Director  
Jennifer Boyer – Community Engagement Coordinator  
Jaena Cotter – Fundraising Assistant

## Contact Information

221 2nd St. NW • Sidney, MT 59270  
Phone: 406-488-2273  
Fax: 406-488-2279  
mboyer@foundationforcommunitycare.org  
www.foundationforcommunitycare.org

## Social Media



www.twitter.com/ffcc3  
www.facebook.com/foundation4communitycare  
www.instagram.com/foundationforcommunitycare



We have so many angels in our community that walk among us. They range in age from young to young at heart. This year, our angels donated \$5000 to help Sidney Health Center patients who need specialized care outside of our community. The funds are designated for travel assistance to get them to healthcare appointments and bring them home again. If you, or someone you know, are in need of healthcare



travel assistance, please call 488-2273, or stop by our office at 221 2nd St NW, to pick up an application. If this program sounds interesting to you and you'd like more information or would like to get involved, please give us a call. More wings make lighter work.



# upcomingEVENTS

## April:

12th - Easter (Office closed Good Friday, April 10)  
30th - Grant & Scholarship Applications due

## May:

25th - Memorial Day (Office closed)  
Grant & Scholarship recipients announced

## July:

10th, 17th, 24th & 31st - Lemonade Stand

## August:

5th-8th - Richland County Fair & Rodeo  
29th - 27<sup>th</sup> Annual Foundation Benefit Golf Tournament

Visit our Facebook page or website for more information about upcoming events:  
[www.foundationforcommunitycare.org](http://www.foundationforcommunitycare.org)

# Giving for Good

By Melissa Boyer, Foundation Director

Pam Burman finally agreed to sit down with me and talk about why she's supported the Foundation for 24 years. It seems like it's taken me that long to talk her into talking about it. That's because philanthropists like Pam don't give for the accolades of giving.

Pam was kind enough to swing by the Foundation office for our chat. She maintains a busy, professional lifestyle as an AVP Consumer Loan Department Manager at Stockman Bank. While visiting with Pam, I found out that her interest in the Foundation began when she was approached by Charles Flynn to replace him as the representative for Fairview on the Sidney Health Center Board of Directors.

"I served on the hospital board for 12 years and LOVED it! I learned so much from so many people. I served during a time when there was a lot of change happening, like the addition of the surgery suite, ICU, the re-model of Med-Surg, the addition of the Cancer Center and the purchase of the Tomotherapy machine. I remember pouring over the blueprints of all the new changes and just being in awe of what was happening. When May-ke A Pledge time came, we (the hospital board) asked if we could be a part of it."

May-ke A Pledge is Sidney Health Center employee giving opportunity that kicks off in the month of May. Before Pam and the rest of the Sidney Health Center Board at the time asked to be included in the campaign, the board was never asked to participate.

"After my 12 years was up, I knew it was time for someone else to serve, but I still wanted to be a part of what was happening. I didn't care that I wasn't a part of May-ke A Pledge any longer since I was no longer on the hospital board, I just knew I wanted to continue to give."

And that's what she did, and still does. Her monthly gifts now qualify her as a bona fide member of the Foundation for Community Care's Sustainer Society. This group of distinguished individuals make gifts to the Foundation regularly through their bank account, credit card, check, mail, PayPal, or any



other way we can accommodate. And the amount is up to the donor.

The more we talked, Pam opened up about where her giving philosophy grew from.

"My parents had 10 children, but there was always an envelope for church every Sunday. I believe that you should always pay it forward first. If you give, you get. I don't think I have ever found myself in a place where I didn't have enough, and I truly think it's because I give. My parents didn't have much when I was young, but they shared what they had, and they always had impeccable timing with their gifts."

Just as Pam's parents gave her a giving heart, she passed that on to her children as well. I dare you to go to an auction or fundraiser and not find a Judd Burman original photograph. Her daughter, AnnDee Taylor, is a bit more like her mother in her ways of giving, but all of them do it for the community they care about, and no other reason than that.

Thanks, Pam. It was a pleasure having this conversation with you.



# We have an ANNOUNCEMENT!

Grants and Scholarships are OPEN for application NOW on the Foundation's website! Go to [www.foundationforcommunitycare.org](http://www.foundationforcommunitycare.org) and click on Grants and Scholarships.

\$335,849.72 in Grants and \$11,000 in Scholarships are available to be awarded to area organizations and students. Application deadline is June 1, 2020 at 4 pm.



# Rockin' Your Heart

For 8 years in a row, the Cattlemen's Ball, brought to you by the MonDak Area Stock Growers Association, has been bringing the "it" factor to their event. Since the beginning, this group of women and men have included the Foundation for Community Care in a big way. The Cardiac Rehabilitation fund that is held for Sidney Health Center here at the Foundation has been where the committee has invested the earnings from this labor of love. The "Rockin' Your Heart Cattlemen's Ball" sends the message that beef is heart healthy, and they back up that claim with a perfectly curated bovine meal, garnished with fresh steamed veggies. Thanks to the Rodiron for cooking the delicious meal and the FFA youth for serving it right on time.

Kyle Shobe and the Walk Em Boys put on a show everyone could appreciate. You could dance, sing, sit and listen, or even visit while they played. They always add a personal touch-so much so it almost feels like you know them. By the end of the night, you might actually know them.

Kyle Shobe and Dan Goss also offered up their services to auction several high-end, hand made, pieces of furniture, art, and housewares. Other fundraisers going on that night included a men's and a women's raffle sponsored by High Plains Veterinarian Clinic and Farm Bureau Insurance. A Plinko board game seemed to be the crowd favorite, having a longer line than the bar for most of the evening.

Everyone knows a good event has good sponsors, but this event had GREAT sponsors, including Tri-County Implement, Seitz Insurance, Prairie Electric, Hurley Enterprises, Prewitt & Company, Sidney Livestock Market, MC Beverage, Sidney Health Center, Franz Ranch, McMillen Ranch Inc., Prewitt Land & Livestock, Kittleson Family Partnership, Dynneson Ranch & Feedlot, Albin Land & Cattle, Yellowstone Bank, and Stockman Bank.

To the event planners, Marci Sondeno, Kristen Larson, Trista Prewitt, Kristan Haugen, Amy Conlin, Jim Steinbeisser, Kate-



lynn Larson, and Alexis Dynneson-Year after year you give of your time and talents. We know you don't do it for the recognition. You do it for your community. For that, a deep, Rockin' Your Heartfelt thank you!

After all was said and sung, \$20,500 was gifted to the Cardiac Rehabilitation fund. It will be used to purchase a cardiac monitor for the Sidney Health Center's ER, so the doctors and nurses can provide the best possible care for you and yours when and where you need it most-right here in your home town.

Pictures Courtesy of:  
Now is a Memory Photography  
[www.facebook.com/Now.is.a.Memory](http://www.facebook.com/Now.is.a.Memory) | (406) 478-3492



# Cherishing Memories of Loved Ones

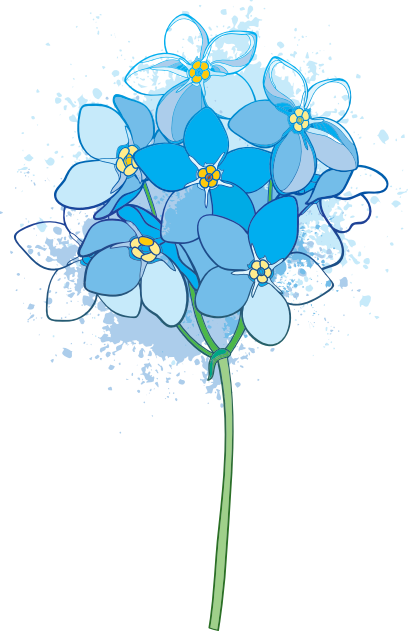
Memorial Day is the unofficial start to summer and beautiful weather. It's a start to spending time with family and friends, barbeques, and other summer activities. This time of year encompasses the happiness and joy that is brought upon us by the reunion of the important people we share our lives with. Although it is seen as a happy time of year, we can't help but feel a little melancholy when it comes around.

Memorial Day is a day we reflect on the passion and dedication of our armed forces giving their lives for freedom. It also marks a time to remember our loved ones who are no longer with us: A time to remember and honor those who have impacted our lives and helped us become who we are today.

During our Memorial Day campaign, donations made in memory or honor through the Foundation for Community Care will support our mission of helping to ensure the continuance and quality of local healthcare in Richland County and the surrounding areas. By making a donation in memory or honor of loved ones, you are giving back to your community while cherishing the memories you have with those you hold dear. To show appreciation for your donation, we will send a personalized card and a ready to plant Forget-Me-Not seed packet to the person(s) or family in whose name the donation was made.

Making a donation to the Foundation for Community Care is a great way to honor and remember loved ones. Not only does it mean something special, it also allows you to plant a seed of generosity and to witness the lasting impact of your loved ones. Your past and present support is appreciated and benefits Richland County's healthcare.

Please consider honoring your loved ones through the attached Memorial Day envelope, or by visiting [www.foundationforcommunitycare.org](http://www.foundationforcommunitycare.org).



**Forget-Me-Nots  
represent the  
immortal love we  
have for those who  
go before us.**

## Watch your giving grow

The Foundation for Community Care's Sustainer Society is made up of community members who make recurring donations throughout the year. Those donations allow us to grow the endowment fund used to give healthcare related grants and scholarships to community organizations and members. In turn, the members of the Sustainer Society get to watch how their donations impact our local healthcare.

To become a Sustainer, all you need to do is set up monthly, recurring payments of the amount of your choice through the Foundation. By doing so, you become a monthly supporter of the Foundation and contribute to our mission: **Helping to ensure the continuance & quality of local healthcare services in Richland County and the surrounding areas.**

As a thank you for becoming one of the first 100 members of the Sustainer Society, we would like to offer you a tree to take home and plant. It is to serve as a reminder of the growth of local healthcare you are contributing to through your recurring donations.

Just like you shower your tree with water, you are shower-

ing this community with support. And as you watch your tree grow, you will also witness the community's healthcare grow in ways that would not be possible without you.

Become a member of our Sustainer Society today and watch your giving grow!

To set up recurring payments, visit us online at [www.foundationforcommunitycare.org](http://www.foundationforcommunitycare.org) or call the Foundation for Community Care at (406)488-2273.

\*Stay tuned for when trees will be available for pickup at [www.foundationforcommunitycare.org](http://www.foundationforcommunitycare.org) or call the Foundation for Community Care at (406)488-2273.





# A funny thing happened...

Sometimes the Foundation gets donations from companies who match their employee's donations to our healthcare mission. This gesture by an employer shows great honor and support for their workforce. Most of the time, the corporate donation and personal donation can be connected to each other, however, on rare occasions, we will receive an anonymous, matching donation from a business. As the staff at the Foundation makes it a priority to thank everyone for their gifts, we try to make every attempt, without offending our donors, to thank them appropriately. Sometimes, funny things happen.

For instance, a check from ONEOK came in the mail, and the note on the check remarked that it was a match from an earlier donation. It was apparent to all of us who work at the Foundation that ONEOK has lots of generous donors and this was going to be a tough puzzle to crack. The best place to start would be to call our contact, Heather Steffes, to help us narrow down our person of great generosity. The best way to tell this story is to let the emails do the talking.



Hi Heather,

The Foundation received a \$XXX check from ONEOK today in the mail. We would love to thank the person who designated the Foundation as the recipient of their volunteer efforts. Is there any way to find out who that was? I would love to do a personal interest story about this in our next newsletter.

Thank you so much!  
Melissa Boyer

Hey Melissa,

That's awesome! Sometimes our employees choose to stay anonymous, but I will see if I can find out and see if they would like to be acknowledged ☺

I'll get back to you soon!

Thank you,  
Heather

A few weeks pass, and I get this message from Heather:

Hi Heather!

Thanks for getting back to me on this. We will be gathering stories for our newsletter in the next month or so. I appreciate you going through the trouble of searching out this kind and thoughtful individual.

I hope you bring in the New Year with friends and family around you!

Melissa

Hey Melissa,

I just wanted you to know that I haven't forgotten about this! I just haven't had a chance to find out who it is yet.

I hope had a wonderful Christmas!

Thank you,  
Heather

Another few weeks pass, and here comes the funny part:

Hi Heather!

Well that is absolutely fantastic! Would you be interested in being featured in our newsletter?

Melissa

Hey girl!

Well, this is embarrassing haha. The check was sent on my behalf. I had requested it be sent quite some time ago, so I assumed the check you were referencing had come from someone else.

Let me know if there is anything I can do to help or answer any questions. Sorry about that!

Thank you,  
Heather

I guess you know her answer.

# Play it Again, Maestro

The Wine & Food Festival has been a “go to” event in Richland County for 26 years. Though it has moved locations, changed formats, added things here, subtracted there, it's just never disappointed.

That was true for 2019's event. While the Event Center at the Richland County Fair and Rodeo looked elegant and was decorated in style, the only thing you really saw at first was the sleek, shining, black grand piano, waiting in anticipation for it's best friend to have a hand-to-key conversation. When Gy Salvavid finally shook hands with his trusty friend, Ashlee Anderson entered the tête-à-tête, with a voice twice her size and just as beautiful as she is. When the three were in an in-tune discussion, the room stopped and paid due attention. Gy, Ashlee, and Gy's piano, (which he took apart and hauled all the way from Culbertson and back) if you are reading this, we can't thank you enough for your performances. You made the night truly unforgettable.

As for the food, huge compliments to all of our chefs! Richard St. Germain, his crew from Sidney Health Center Food Services, and a crowd of volunteers delivered tasteful bites to our VIP section, with rave reviews. Other favorite food vendors included Pizza House, Moe's Smokin' Grill, The Fringe, Meadowlark Public House, Reynold's Market, Burns Creek Inn, Millers' Corner, and The Rush Espresso.

Meandering through the donated art pieces always creates an excitement and a wonderment. This event has such dedicated artists that our frequent attendees like to see what our artists create from year to year. Having this following thankfully creates bidding wars and helps ensure the continuance and quality of local healthcare services. The art portion of this event raised \$9210 of the \$29,800 total amount raised this year, in spite of the fact that we went with an online auction format. Even though there was some grumblings at the beginning of the evening, people got the hang of bidding with their phones; some even thought it was fun! Many thanks to our very talented artists. You add so much elegance and culture to the Wine and Food Festival each and every year!

AmeriCorps Members serving in the area kindly donated their evening to the cause and poured endless amounts of wine for all of our guests. Many thanks to them for their kindness, support, and steady hands.

This event has amazing planners (you know who you are, thank you infinity) and is also supported by our terrific sponsors: Blue Rock Distribution, Sidney Health Center, Seitz Insurance, Kringen Construction, Tri-County Implement, OneOk, Stockman Bank, Hurley Enterprises, Guardian Flight, Montana State Fund, Prairie Electric, & Richland Pump and Supply. See you next year!

