



CHARLEY'S CHALLENGE

By: Jennifer Boyer
Foundation for Community Care Community Engagement Coordinator

Charley Butler seems like a normal guy—certainly not someone who has fought and beaten cancer twice, but he is that guy.

When Charley was first diagnosed with cancer, he faithfully followed all the protocols of his treatment plan and began to rebuild his life. To his dismay, six months later he was diagnosed with two more forms of cancer. He would bear another routine of treatments, appointments, and lab draws – a grueling regimen that broke down his system, but ultimately defeated his cancer.

During this trying time in Charley's life, he was directed to the Foundation for Community Care's Cancer Coalition Aid Fund; a fund for those with a current cancer diagnosis from Richland County or who are seeking care at Sidney Health Center's Cancer Care Center. Upon receiving the grant, he and his wife, Chole, felt many emotions

from relief, to support, to comfort.

Now, he was faced with restoring himself to a healthier and stronger body. Charley turned to weight lifting and his attention was drawn to strong man competitions. He also recalled what an impact support made on his recovery. He so appreciated the gesture from the Cancer Coalition Aid Fund and wanted to make sure that this funding would be available for others, too. Charley decided he wanted to support those carrying the heavy burden of a cancer diagnosis. To demonstrate the true weight of situations like his, he decided to pull a fire truck...with his own human strength...hoping to inspire others to fight hard and offer support.... he just didn't know where to begin.

The Foundation's involvement began when I got a message from Charley, explaining his desire to help out with fundraising for the Cancer Coalition Aid Fund, and the rest steam rolled

ahead. Other supporters didn't even hesitate to jump on board to set **Charley's Challenge** in motion. Larry Christensen and the Sidney Volunteer Fire Department helped Charley train, set up, and orchestrate the event. Jamie Larson at the Richland County Fair and Rodeo, helped find a time slot, and Dave and Cathy Wierich of Brookman Rodeo, helped integrate the firetruck pull into the impactful Tough Enough to Wear Pink Rodeo's schedule. Nick Kallem provided the sound system, and countless others helped set up for the show of strength. **Charley's Challenge** was a true group effort that all began with one man's desire to help others. Charley pulled the firetruck over 140 feet to victory.

The one thing that cancer cannot steal is the strength and courage it takes to face it. What is learned from the battle makes everyone stronger and what we do with that IS what matters. Charley Butler did just that - twice!

NOTES FROM THE DIRECTOR

Though I am the new Foundation for Community Care Director, I am not new to the Foundation. I have served alongside this organization for over 10 years— a badge I wear proudly. Being the Director here means so much to me, but mostly it means that I am still part of an amazing TEAM that has the truest intentions to make our community a healthier place to live.

Chuck Page said, "A single leaf working alone provides no shade." I am often reminded of this during Foundation fundraising events. So much time and effort goes into event planning, and then it's over in the blink of an eye!

In recent years, our most successful event has been Giving Tuesday. This year it falls on December 3rd, right after Black Friday, Shop Small Saturday, and Cyber Monday. Giving Tuesday kicks off the charitable giving season, when many focus on holiday and end-of year giving. During this time, I hope you'll stay tuned into the Foundation's Facebook page and email campaign. Area families and businesses match individual donations, which makes this campaign so important to our community. I know together, we can make a lot of shade!

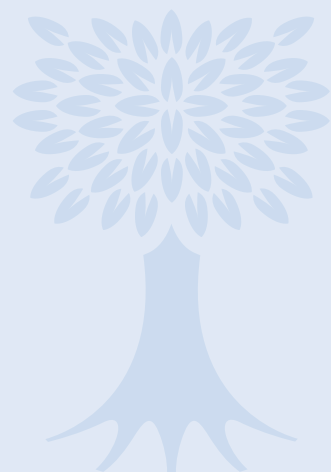
With Appreciation,



Melissa Boyer



Melissa Boyer
Foundation Director



OUR MISSION

The mission of the Foundation for Community Care is to help ensure the continuance and quality of local healthcare services.

Board of Directors

Chair - Cami Skinner – Sidney, MT
Vice Chair- David Williams – Sidney, MT
Treasurer - Lorilee Norby – Sidney, MT
Jeff Aisenbrey – Sidney, MT
Paula Bostrom – Sidney, MT
Margaret Bradley – Sidney, MT
Jared Burd, O.D. – Sidney, MT
Larry Christensen – Sidney, MT
Carl Dynneson – Sidney, MT
Kristan Haugen – Alexander, ND
Doug Hettich – Sidney, MT
Duane Mitchell – Sidney, MT
Larry Riggs – Sidney, MT
Joe Steinbeisser – Sidney, MT
Todd Verhasselt – Savage, MT
Lana Watson – Lambert, MT
Rosemary Weber – Fairview, MT

Emeritus Board of Directors

Bud Grosinsky
Michael McCollum
Leonard Odenbach

Staff

Melissa Boyer, CGPA - Director
Jennifer Boyer – Community Engagement Coordinator
Jaena Cotter – Fundraising Assistant

Contact Information

221 2nd St. NW • Sidney, MT 59270
Phone: 406-488-2273
Fax: 406-488-2279
mboyer@foundationforcommunitycare.org
www.foundationforcommunitycare.org

Social Media



www.twitter.com/ffcc3
www.facebook.com/foundation4communitycare
www.instagram.com/foundationforcommunitycare

New Addition to the Foundation Family



Jaena Cotter

Jaena Cotter, a Fairview native, started her position as the Foundation Assistant on August 19th, 2019.

She graduated from Montana State University – Billings with a bachelor's degree in marketing in May 2019. She has been involved with several boards, committees, clubs, and volunteer events at MSUB, such as the College of Business's Student Advisory Board, a hiring committee for a tenure track marketing professor, accounting club, and Service Saturdays.

Jaena likes to spend her spare time partaking in outdoor activities with family and friends. She is very excited to be joining the Foundation for Community Care family and is looking forward to using her skills to help the community achieve its highest quality healthcare now and into the future.



upcomingEVENTS

November:

2nd - Wine & Food Festival

December:

All Month - Light A Life Campaign

3rd - Giving Tuesday

17th - Foundation for Community Care Open House

February:

8th - Cattlemen's Ball

Visit our Facebook page or website for more information about upcoming events:

www.foundationforcommunitycare.org

Kindfully. Yours

At the Foundation for Community Care, we are always looking for ways to serve our donors in the best ways possible. That means we try to keep you updated on what's happening in our office and in our community, how we are using and growing the donations you so graciously give, and making it easier for you to get in touch with us.

Our newest venture in keeping connected with you is called Kindful. So many of us are online these days, so we are making it as simple as possible to keep up-to-date technology available to our donors. Now, with the addition of Kindful, it's never been easier to give. We've even integrated PayPal!

Kindful also allows all donors to have their very own profile.

That way you can securely save your payment information for recurring gifts, or for the next time you want to make a memorial donation. When you have a change of address or phone number, you can also update your personal information without the hassle of filling out any forms-just log into your profile and change it! Year end receipts will also be available for you to download from your portal. Of course, we are always ready to help you by phone, email, and in person at our office.

If you have any changes you'd like to make to your contact information, and you are not an internet savvy person, please use the remittance envelope provided in this newsletter, send it back to us, and we will update your information for you. You can also call us at 406-488-2273.

Have a Kindful kind of day!



A Message from the New Cancer Care Director

I am Tyaunna Hickey and I go by "Ty" for short and recently started as Cancer Care Director at Sidney Health Center. I obtained my Bachelor's in Health Administration from the University of Minnesota – Duluth and am currently pursuing my Master's in Health Administration from Montana State University – Billings. While other children were obsessing about shows like the Power Rangers and Full House, I was obsessed with the show Rescue 911 (yes I did just date myself and no that is not normal behavior). It is safe to say that healthcare has been a passion of mine since childhood.

My devotion for healthcare developed even more as I witnessed my husband, Dr. James Hickey, go through the medical training process over the last decade. Working remotely for the past five years allowed me to travel all around the United States with Dr. Hickey while he trained at different medical institutions giving me insights on many best practices nationwide. Professionally, I have worked in a few different fields of medicine that include: Radiology, Family Medicine, Behavioral Health, Long Term Care, and Home Care.

I am so happy to become a part of the Cancer Care team. I thought I already knew what great provider's both Dr. Pedersen and Dr. Kiehl are; however, the open house that was held on my first week of work was really enlightening. Seeing their



Ty Hickey enjoying time with her family.

quality through their patient's eyes was the best part. I am amazed that this resource is available in rural Montana and was so excited to see all the different ways this center has touched so many. Hopefully, I can be a part of the rural healthcare challenge and bring my rounded experience to serve the needs of not only this department, but the entire community.

26TH ANNUAL GOLF TOURNAMENT

By Jaena Cotter
Foundation for Community Care Assistant

On August 24th, the Foundation for Community Care held our 26th Annual Golf Scramble at the Sidney Country Club. The weather was beautiful and it was a fantastic day for golfers, volunteers, and our staff.



The golf scramble is one of the Foundation's most anticipated fund-raising events. Our staff and board members are thankful for each and every person that came out to support the event, whether it was to golf, volunteer, or sponsor. The event could not have happened without every individual that was involved, including the staff at the Sidney Country Club. They helped make the tournament run quite smoothly.

The funds raised from this golf scramble directly benefit the Donor Restricted Endowment fund, which allows the Foundation to use the money for grants and scholarships that will benefit healthcare in Richland County. This year, the tournament raised nearly \$30,000.

The participation from everyone helped the Foundation work towards our mission: "Helping to ensure the continuance and quality of local healthcare services in Richland County and surrounding areas."

All of us at the Foundation for Community Care are looking forward to hosting the golf scramble again next year, with hopes that it will turn out just as great as this year's!



THANK YOU TO OUR SPONSORS!

PRESENTING SPONSORS

DCI Credit Services, Inc.
Mid-Rivers Communications

PUTTING CONTEST & DRIVING RANGE SPONSOR

Sidney Health Center

PRO SHOP SPONSOR

Tri County Implement

CART SPONSORS

Allied Investment Advisors
Kringen Construction, Inc.

FLAG SPONSORS

Hurley's Oilfield Service
Johnson Hardware & Furniture
Seitz Insurance Agency

BEVERAGE SPONSORS

Richland Federal Credit Union
Beagle Properties, Inc.
US Bank

Richland Pump & Supply
Lower Yellowstone REC
Sidney Dental
Yellowstone Insurance Exchange, RRG

J&L Fencing
SDI Architects & Designs
Blue Rock

BALL CANNON SPONSOR

Jensen Services, Inc.

NACHO BAR SPONSORS

Action Auto
Eagle Country Ford

HOLE-IN-ONE CONTEST SPONSORS

CM Built Doors – Hole-in-One Contest
Gem City Motors – Hole-in-One Sponsor

ADDITIONAL SUPPORT SPONSORS

Big Sky Siding & Windows
Cattle-Ac
Joe & Sheila Couture
The Depot
ElectricLand

EastMont
Footers
HealthWorks
High Caliber Sports
Pizza House
Ranger Lounge, Casino, & Eatery
Rodiron Grill
The Rush Espresso
Sidney Liquor Store
Silver Junction Espresso
Stockman Bank
Ken Swenson
TapHouse Bar & Grill

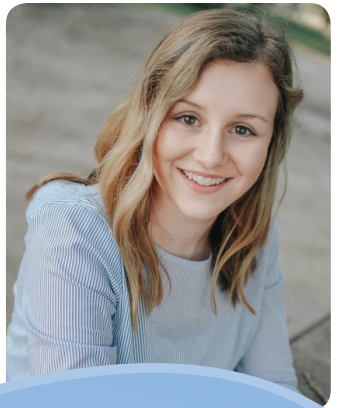


HEALTHCARE SCHOLARSHIP

Part of living in a healthy community means having the best healthcare available when you need it. Medical facilities can have the latest in medical equipment to treat and diagnose all kinds of ailments, but if there aren't any highly qualified staff to administer the tests and treat the patients, where is the value in that?

The Foundation for Community Care realizes the importance of cutting edge technology AND recruiting and training medical professionals to lead individuals to their highest level of health and wellbeing. That's why each March we offer Healthcare Scholarships for area students pursuing a career in the medical industry. Recipients are selected in May and universities are paid directly from the Foundation for Community Care's Healthcare Scholarship Fund.

On behalf of the Foundation's Healthcare Scholarship Committee, we are asking for your support. Through your generosity to the Healthcare Scholarship Fund, we can ensure our community is served by highly trained medical professionals not only today, but for generations to come.



"Thank you for selecting me as one of the recipients of the healthcare scholarship. By receiving this scholarship, I am able to continue my education to become a nurse and return back to Richland County and care for the community. Thanks again!"

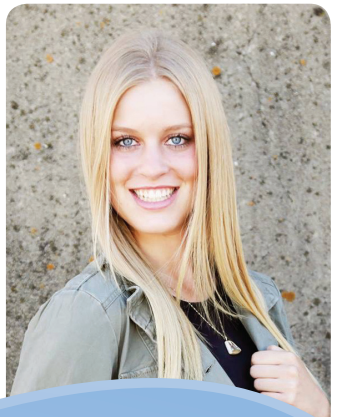
Faith Vitt, Nursing Student
Healthcare Scholarship Recipient



*Thank You
for investing
in the future
of healthcare!*

"Thank you for this scholarship opportunity; it means a lot. I have wanted to be a nurse for as long as I can remember and this scholarship allows me to finish pursuing that goal. I am going into my senior year at the University of Jamestown, pursuing a Bachelors of Science in Nursing. I plan to return to school after graduation to get my neonatal nurse practitioner license. Thank you so much."

Brianna Reid, Nursing Student
Healthcare Scholarship Recipient

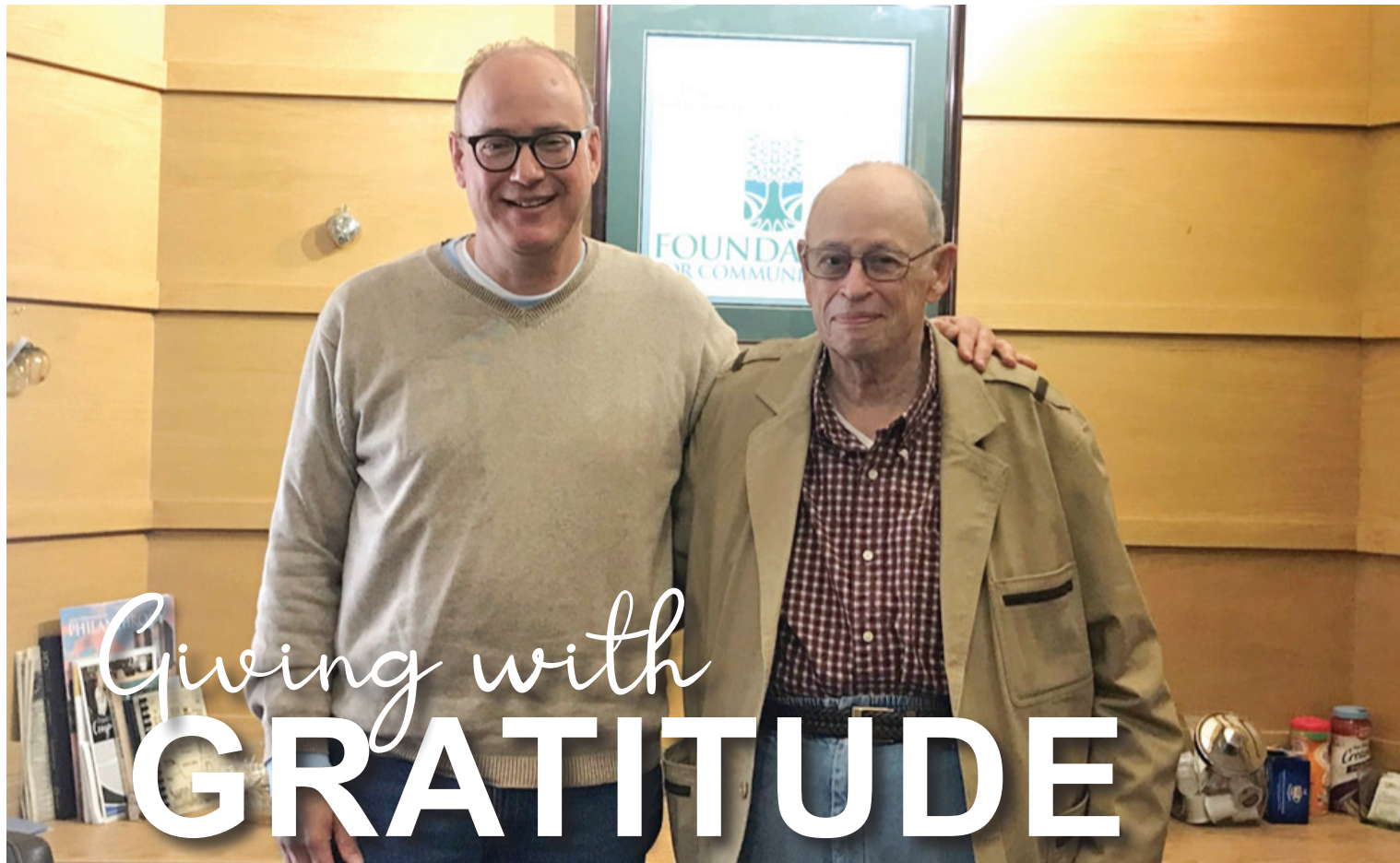


"Thank you to for this awesome scholarship award. I truly appreciate your generosity and the money will be extremely helpful as I further my education and pursue a degree in Health Care Administration. Thank you again!"

Tierney Messmer,
Healthcare Administration Student
Healthcare Scholarship Recipient

*Please consider making a donation to the
Foundation for Community Care Healthcare Scholarship Fund today.*

The remittance envelope included in this newsletter may be used to send in your donation or stop by our office at 221 2nd Street NW, Sidney, MT 59270 Monday-Friday 8am-4:30pm. Gifts can also be made by credit or debit card at www.foundationforcommunitycare.org



By Melissa Boyer
Foundation for Community Care Director

Most days at the Foundation for Community Care are pretty predictable. The best parts of those days are when our favorite “regulars” stop by for a visit. Recently, a long time donor, one whom I’d been trying to reach out to to thank for some time, strolled right through our front door, accompanied by his son, all smiles and handshakes.

His son introduced himself first. “Hi, I’m David Knapp, and this is my father, James.” Just then, James reached for my hand and said “Nice to meet you, I’m Jimmy.” At that moment, I knew this was going to be an enlightening visit, and we hadn’t even made it out of the entry way yet.

We convened in our cozy meeting room after deciding no one needed coffee, water, or tea. It was clear that David had followed in his father’s footsteps and made a successful career in the oil industry. He was very well prepared and organized for our meeting, making sure I understood what I needed to do with the mountains of paperwork that would be coming my way in the coming month-paperwork that I was looking forward to

pouring over. Having been a business associate of Joe Halvorsen for many years, Jimmy was entrusted with mineral royalty interest that he wanted to donate to the Foundation for Community Care in memory of Joe.

David explained that the Foundation would receive payments based on production and the price of oil, as long as the oil wells in question were producing. The Foundation wouldn’t have to bother with owning any land or mineral rights; it would just enjoy the financial benefits.

Jimmy decided to donate this mineral interest to the Foundation for Community Care for several reasons. He mentioned that he liked to donate to many worthy charities in our area. “He doesn’t like to spend it on himself,” David chuckled. As a true philanthropist does, Jimmy gives to non-profits that have touched his heart in some way. This particular donation was made in memory of Joe Halvorsen, who lived at the Lodge and Sidney Health Center’s Extended Care. Jimmy wanted to honor Joe by thanking those organizations and caregivers for the care and dignity they gave to Joe

while he made his home with them. He also mentioned that his annual donations are because he believes in the professionals at Sidney Health Center. “Dr. Karanjai was the one who gave me the stress test that lead to my triple by-pass. Without that by-pass, I wouldn’t be here. Dr. Cooper was a great doc too, and Doc Harper.”

From there, we found common ground visiting about his past, his time in Baker where I grew up, traveling the United States, 30 years of driving from Glendive to Sidney for work, and he educated me about the colorful history of the Sunrise City. During our conversation, you could tell from the appreciative glances that Jimmy had a deep respect and love for his son, as well as David for James.

If Jimmy hadn’t had another appointment after ours, I suppose we would have chatted through lunch and into the afternoon. This is a day I won’t forget; in fact, I hope that Jimmy and David find themselves in need of coffee, water, or tea sometime soon.

New Physician Joins Sidney Health Center Medical Staff



James Hickey, D.O. joins the Sidney Health Center medical staff as a Family Medicine physician.

Dr. Hickey provides a wide range of primary care services to people of all ages. His scope of practice includes diagnosing and treating illnesses, managing chronic conditions such as high blood pressure, diabetes and asthma as well as providing preventive care such as routine checkups, health-risk assessments and screening tests for men, women and children. He will also be providing newborn care for the newest arrivals at Sidney Health Center.

Dr. Hickey received his medical degree from Rocky Vista University College of Osteopathic Medicine in Parker, CO. He went onto complete his family medicine residency through the Montana Family Medicine Residency in Billings, MT. Dr. Hickey is a familiar face at Sidney Health Center as he has been providing care in the Emergency Department over the past year.

Dr. Hickey is located at the Sidney Health Center Primary Care Clinic. He and his wife, Ty, and their daughter enjoy the outdoors and spending time with family. Dr. Hickey also enjoys hunting, fishing and snowboarding.

To schedule an appointment with Dr. Hickey, call 406-488-2510.

Currently, Sidney Health Center’s medical staff is comprised of twenty-five local physicians who offer services across the spectrum of care including emergency medicine, family medicine, internal medicine, pediatrics, obstetrics/gynecology, general surgery, orthopedic surgery, otolaryngology (ENT), podiatry, aesthetic medicine, medical oncology, radiation oncology, pathology, and radiology. In addition, four family nurse practitioners, four physician assistants, three nurse anesthetists and an audiologist compliment the medical staff and round out the team.

To see profiles of the entire team, visit Sidney Health Center’s website at www.sidneyhealth.org

Wine & Food FESTIVAL

SATURDAY, NOVEMBER 2
7:00 PM - 10:00 PM

RICHLAND COUNTY FAIR EVENT CENTER

Tickets are available for purchase at the Foundation for Community Care or by calling (406) 488-2273.

INDIVIDUALS MUST BE 21 YEARS OF AGE TO ATTEND. ALL ATTENDEES WILL BE CARDING AT THE EVENT.

Wine & Food PAIRINGS Highlighting Local Restaurants

Silent Auction Exclusive Artwork and Experiences